



ResMed

ResMed Air Solutions

device and accessories guide



AirSense™ 10 CPAP

	US	Canada
AirSense 10 CPAP with HumidAir™	37203	37398
AirSense 10 CPAP with HumidAir and ClimateLineAir™	37204	37399



AirSense 10 Elite and AirSense 10 AutoSet™

	US	Canada
AirSense 10 Elite with HumidAir	37205	37400
AirSense 10 Elite with HumidAir and ClimateLineAir	37206	37401
AirSense 10 AutoSet with HumidAir	37207	37402
AirSense 10 AutoSet with HumidAir and ClimateLineAir	37208	37403



AirSense 10 AutoSet for Her

	US	Canada
AirSense 10 AutoSet for Her with HumidAir	37209	37404
AirSense 10 AutoSet for Her with HumidAir and ClimateLineAir	37210	37405



AirCurve™ 10 series

	US	Canada
AirCurve 10 S with HumidAir	37213	37408
AirCurve 10 S with HumidAir and ClimateLineAir	37214	
AirCurve 10 ST with HumidAir	37306	37412
AirCurve 10 ST with HumidAir and ClimateLineAir	37307	
AirCurve 10 VAuto with HumidAir	37211	37406
AirCurve 10 VAuto with HumidAir and ClimateLineAir	37212	
AirCurve 10 ASV with HumidAir	37215	37410
AirCurve 10 ASV with HumidAir and ClimateLineAir	37216	
AirCurve 10 ST-A with HumidAir	28210	28219
AirCurve 10 ST-A with HumidAir and ClimateLineAir	28211	



Accessories



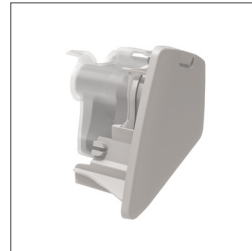
37296 ClimateLineAir heated tube
37357 ClimateLineAir Oxy heated tube
36810 SlimLine™ tube



37394 Air10 tubing elbow (in-line elbow for use with non-heated tubing)



HumidAir heated humidifier
37299 Standard tub
37479 Cleanable Tub



Air10™ side cover
37335 Gray (AutoSet for Her, AirCurve 10)
37303 Charcoal (CPAP, Elite, AutoSet)



37310 Air outlet (connects device and tube; disinfect or replace for multi-patient use)



SD card protective folder
37329 with card (10 pk)
37330 without card (10 pk)
36931 SD card reader



Side panel rubber SD card door
19766 Gray (AutoSet for Her, AirCurve)
19728 Charcoal (CPAP, Elite, AutoSet)



37302 Air10 oximetry module
22374 Xpod® oximeter
22371 Xpod clip
707560 Reusable soft sensor (medium) – 3-meter cable
370004 Air10 Oximetry Complete Kit: Includes oximetry module, Xpod, Xpod clip, reusable soft sensor (medium)



Filters – standard
36850 (1 pk) **36851** (2 pk)
36852 (12 pk) **36853** (50 pk)
 Filters – hypoallergenic
36855 (1 pk) **36856** (2 pk)
36857 (12 pk) **36858** (50 pk)
 Filter cover
19768 Gray (AutoSet for Her, AirCurve)
19729 Charcoal (CPAP, Elite, AutoSet)



37304 Travel bag
37305 Travel bag for Her

Additional accessories

Power accessories

- 37297** Air10 DC–DC converter
- 37344** Air10 power supply unit (90W) (RPS II and ST-A Only)
- 37474** Air10 Power Supply Unit (90W) II (Not compatible with RPS II or ST-A)

ResMed Power Station II

- 24923** RPS II
- 37343** Air10 DC cable
- 37342** Air10 power supply unit adaptor
- 249009** RPS II Kit for Air10: includes RPS II, Air10 DC cable, Air10 power supply adapter

Standard tubing

- 14994** (6' replacement standard tubing)
- 14987** (6' 6" replacement standard tubing)
- 14986** (6' 6" replacement autoclavable standard tubing)
- 14999** (9' replacement standard tubing. AirCurve only)

Faceplates

- 19736** Air 10 silver faceplate
- 19735** Air 10 white w/gray design faceplate
- 19734** Air 10 black faceplate

Tubing wraps

- 36811** SlimLine tubing wrap
- 33963** Standard tubing wrap

ResScan™ software

To order ResScan patient management software, **contact ResMed Customer Service.**

Images may not be an exact representation of the final product and not all products are available in all regions.

Distributed by ResMed Corp, 9001 Spectrum Center Boulevard, San Diego, CA 92123 USA +1 858 836 5000 or 1 800 424 0737 (toll free). See ResMed.com for other ResMed locations worldwide. Air10, AirCurve, AirSense, AutoSet, ClimateLineAir, HumidAir, ResScan and SlimLine are trademarks and/or registered trademarks of the ResMed family of companies. Xpod is a trademark or registered trademark of Nonin Medical, Inc. Specifications may change without notice. For patent and other intellectual property information, see ResMed.com/ip. © 2019 ResMed. 1017667/9 2019-02